



**Kunsthistorisches
Institut
in
Florenz**

Max-Planck-Institut



MAX-PLANCK-GESELLSCHAFT

Fotokatalog
Photographic Catalogue
Catalogo fotografico

Source: <http://www.khi.fi.it/5201080/Fotokataloge>

Stable URL: http://wwwuser.gwdg.de/~fotokat/Fotokataloge/Hanfstaengl_o_J_5_I.pdf

Published by: Photothek des Kunsthistorischen Instituts in Florenz, Max-Planck-Institut

<http://www.khi.fi.it>



**Kunsthistorisches
Institut
in
Florenz**

Max-Planck-Institut



MAX-PLANCK-GESELLSCHAFT

Fotokatalog
Photographic Catalogue
Catalogo fotografico

Source: <http://www.khi.fi.it/5201080/Fotokataloge>

Stable URL: http://wwwuser.gwdg.de/~fotokat/Fotokataloge/Hanfstaengl_o_J_5_I.pdf

Published by: Photothek des Kunsthistorischen Instituts in Florenz, Max-Planck-Institut

<http://www.khi.fi.it>

FRANZ HANFSTAENGLS
LISTS OF REPRODUCTIONS FROM
ENGLISH & CONTINENTAL
GALLERIES

The
National Gallery
London



FRANZ HANFSTAENGL
16 PALL MALL EAST
LONDON S.W.
MUNICH * NEW YORK

Sizes and Prices

Note: All reproductions mentioned in this catalogue are issued in permanent Carbon Print, with the exception of the Folio-Size, which is printed in a permanent process closely resembling the Carbon Finish but not as expensive.

For Reproductions in Photogravure — specially suitable for Wall Decoration see special List.

Permanent Print

F denotes Folio size 10 × 8 inches
Price 1/—

Permanent Carbon Print

R denotes Royal size 15 × 10 inches
Price 6/—

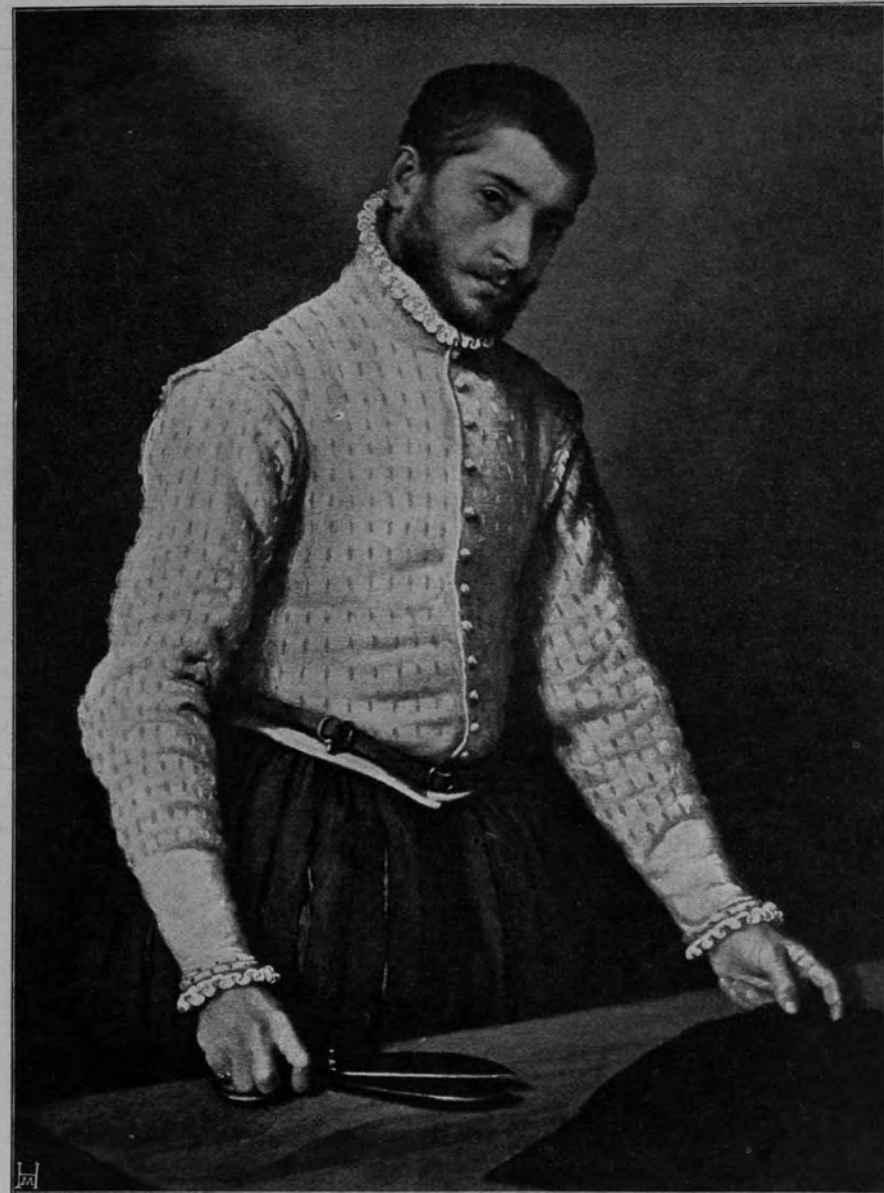
I denotes Imperial size 21 × 16 inches
Price 12/—

Facs. denotes Facsimile size 28 × 21 inches
Price 30/—

E denotes Extra size 36 × 28 inches
Price 50/—

The prints are supplied unmounted — unless otherwise desired
 no charge is made for rough mounting.

The price for copies mounted on Plate Paper is:
 Folio 1/6 — Royal 7/6 — Imperial 15/—.



GIAMBATTISTA MORONI
 PORTRAIT OF A TAILOR



THOMAS GAINSBOROUGH

PORTRAIT OF MRS. SIDDONS

NATIONAL GALLERY LONDON

	No. of the National Gallery Catalogue	
411 Aldegrever Heinrich, ?—1555?. Portrait of a Man	1232	<i>F</i>
1 Allegri Antonio da Correggio, 1494—1534. Christ presented by Pilate to the People, called the "Ecce Homo"	15	<i>FR</i>
2 — Mercury instructing Cupid in the Presence of Venus	10	<i>FR I</i>
412 — The Holy Family	23	<i>F</i>
413 — Christ's Agony in the Garden	76	<i>F</i>
516 Amberger Christoph. Portrait of a Man.	S. C.	<i>F</i>
535 Ambrogio de Predis. An Angel playing on a musical instrument (Violin)	1661	<i>F</i>
536 — An Angel playing on a musical instrument (Guitar)	1662	<i>F</i>
286 Amerighi Michael Angelo, (da Caravaggio) 1569—1609. Christ and the two Disciples at Emmaus	172	<i>FR</i>
101 Andrea di Luigi. The Madonna and Child	1220	<i>FR</i>
3 Angelico Fra Giovanni, 1387—1455. Christ surrounded by Angels in the midst of the Blessed	663	<i>FR I</i>
4 Antonello da Messina, 1444—1493. St. Jerome in his Study	1418	<i>FR</i>
462 — Portrait of a young Man	1141	<i>F</i>
102 Avercamp Hendrik van, 1585—?. A Winter Scene	1346	<i>FR</i>
5 Bakhuizen Ludolf, 1631—1708. Dutch Shipping	223	<i>FR</i>
103 — Ships in a Gale	1442	<i>FR</i>
287 Baldung Hans, 1476—1545. Bust Portrait of a Senator	245	<i>FR</i>
288 — The Dead Christ; a Pietà	1427	<i>FR</i>
414 Barbarelli Giorgio, 1477—1511. A Knight in Armour	269	<i>F</i>

NATIONAL GALLERY LONDON

	No. of the National Gallery Catalogue	
415 Barbarelli . The Adoration of the Magi	1160	<i>F</i>
6 — <i>School of Barbarelli</i> . The garden of Love . . .	930	<i>F R</i>
289 Barbieri Giovanni Francesco , 1591—1666. Angels weeping over the dead Christ	22	<i>F R</i>
290 Barocci Federigo , 1528—1612. A "Holy Family"	29	<i>F R</i>
104 Basaiti Marco . The Infant Christ asleep on the lap of the Virgin	599	<i>F R</i>
416 Bazzi Giovanni Antonio , 1477—1549. Head of Our Lord	1337	<i>F</i>
105 Beerstraaten Jan , 1622—1666. A Winter Scene .	1311	<i>F R</i>
7 Bellini Giovanni , 1428—1516. Portrait of the Doge Leonardo Loredano	189	<i>F R I</i>
8 — Madonna and Child	280	<i>F R I</i>
9 — The Blood of the Redeemer	1233	<i>F R</i>
10 — St. Dominic	1440	<i>F R I</i>
106 — Christ's Agony in the Garden	726	<i>F R</i>
107 — St. Peter Martyr	808	<i>F R</i>
108 — Landscape, with the Death of St. Peter Martyr, 1252	812	<i>F R</i>
110 — St. Jerome in his Study	694	<i>F R</i>
291 — The Circumcision	1455	<i>F R</i>
109 — <i>School of Giovanni Bellini</i> . A Warrior adoring the Infant Christ	234	<i>F R I</i>
417 — (<i>Ascribed</i> .) Ecce Homo	1310	<i>F</i>
111 Beltraffio Giovanni Antonio , 1467—1516. The Madonna and Child	728	<i>F R</i>
112 Benvenuto da Siena , 1436—1518. Madonna and Child with Saints	909	<i>F R</i>

NATIONAL GALLERY LONDON

	No. of the National Gallery Catalogue	
419 Berchem Nicolas , 1620—1683. Ploughing	1005	<i>F</i>
113 Berck-Heyde Gerrit Adriaensz , 1638—1698. A View in Haarlem	1420	<i>F R</i>
114 — Interior of a Church	1451	<i>F R</i>
292 Bibiena Ferdinando , 1657—1743. The Teatro Farnese, Parma	936	<i>F R</i>
418 Bissolo Francesco , <i>Ascribed to</i> . Portrait of a Lady	631	<i>F</i>
293 Boccaccino Boccaccio , ?—1525. The Procession to Calvary	806	<i>F R</i>
115 Bonifazio Veronese . The Madonna and Child with Saints	1202	<i>F R</i>
420 Bono da Ferrara . St. Jerome in the Desert . . .	771	<i>F</i>
11 Bonvicino Alessandro , called <i>il Moretto di Brescia</i> , 1498—1555. Portrait of an Italian Nobleman	299	<i>F R</i>
12 — Portrait of an Italian Nobleman	1025	<i>F R I</i>
294 — St. Bernardine of Siena	625	<i>F R</i>
13 Bordone Paris , 1500—1570. Daphnis and Chloe .	637	<i>F R</i>
14 — Portrait of a Lady	674	<i>F R I</i>
116 Borgognone Ambrogio , 1455—1523. The Marriage of St. Catherine of Alexandria	298	<i>F R</i>
117 — A Triptych	1077	<i>F R</i>
421 — Family Portraits	779	<i>F</i>
422 — Family Portraits	780	<i>F</i>
423 — The Virgin and Child	1410	<i>F</i>

NATIONAL GALLERY LONDON

	No. of the National Gallery Catalogue	
15 Both Jan, 1610—1652. Landscape, with a Party of Muleteers	71	<i>FR</i>
118 Both Jan and Cornelis van Poelenburg, 1586—1667 Landscape, with Figures	209	<i>FR</i>
295 — Cattle and Figures	957	<i>FR</i>
Botticelli see Filipepi.		
296 Boucher François, 1704—1770. Pan and Syrinx .	1090	<i>FR</i>
517 Bouts Dierick. The Virgin with Child	S. C.	<i>F</i>
119 Brekelenkam Quiryn van, ?—1668. An Interior, with Figures	1329	<i>FR</i>
16 Bronzino, Angelo di Cosimo called, 1502—1572. Venus, Cupid, Folly and Time. An Allegory	651	<i>FR I</i>
424 — Portrait of a Lady	650	<i>FR</i>
518 Bruyn Bartholomaeus. Portrait of a Man	S. C.	<i>F</i>
120 Buonarroti Michelangelo, 1475—1564. The Entombment of Our Lord	790	<i>FR</i>
121 — The Madonna and Infant Christ, St. John the Baptist and Angels	809	<i>FR</i>
297 — A Dream of Human Life	8	<i>FR</i>
122 Bylert Jan van, 1603—1671. A Family Group .	1292	<i>FR</i>
17 Caliari Paolo, called <i>Paolo Veronese</i> , 1528—1588. The Rape of Europa	97	<i>FR</i>
18 — The Adoration of the Magi, or the Wise Men's Offering	268	<i>FR I</i>
19 — The Family of Darius at the Feet of Alexander, after the battle of Issus, B. C. 333	294	<i>FR I</i>

NATIONAL GALLERY LONDON

	No. of the National Gallery Catalogue	
20 Caliari Paolo, called <i>Paolo Veronese</i> , 1528—1588. St. Helena. Vision of the Invention of the Cross	1041	<i>FR I</i>
298 — The Magdalene laying aside her Jewels	931	<i>FR</i>
530 — "Happy Union" (An Allegorical Group)	1326	<i>FR</i>
531 — "Scorn" (" " ")	1324	<i>FR</i>
532 — "Respect" (" " ")	1325	<i>FR</i>
533 — "Unfaithfulness" (" " ")	1318	<i>FR</i>
299 Canale Antonio, or Canaletto, 1697—1768. A View in Venice	127	<i>FR</i>
300 — A View on the Grand Canal, Venice	163	<i>FR</i>
301 — The Scuola di San Rocco The figures are by Giov. Battista Tiepolo.	937	<i>FR</i>
302 — Regatta on the Grand Canal	938	<i>FR</i>
303 — Interior of the Rotunda at Ranelagh in London	1429	<i>FR</i>
123 Cappelle Jan van de. River Scene with State Barge	965	<i>FR</i>
124 — River Scene	966	<i>FR</i>
Caravaggio see Amerighi.		
125 Carpaccio Vittore. The Madonna and Child enthroned, with Saints John and Christopher, and the Doge Giovanni Mocenigo in Adoration	750	<i>FR</i>
304 Carracci Annibale, 1560—1609. Christ appearing to Simon Peter after His Resurrection	9	<i>FR</i>
305 — Erminia takes Refuge with the Shepherds	88	<i>FR</i>
306 — Silenus gathering Grapes	93	<i>FR</i>
307 — Pan teaching Apollo to play on the Pipes, or Bacchus playing to Silenus	94	<i>FR</i>

NATIONAL GALLERY LONDON

	No. of the National Gallery Catalogue	
308 Carracci Lodovico, 1555—1619. Susannah and the two Elders, in the Garden of Joachim, at Babylon	28	<i>F R</i>
310 Champaigne Philippe de, 1602—1674. Three Portraits of Cardinal de Richelieu	798	<i>F R</i>
21 Cima Giovanni Battista, 1489—1517. The Infant Christ standing on the Knees of the Virgin	300	<i>F R I</i>
126 — The Incredulity of St. Thomas	816	<i>F R</i>
309 — Madonna, with the Infant Christ standing on her Knees	633	<i>F R</i>
127 Cimabue Giovanni, 1240—1302. The Madonna and Child enthroned; Angels adoring	565	<i>F R</i>
519 Clouet François. Duchess of Angoulême	S. C.	<i>F</i>
425 — (<i>Ascribed to</i>) 1510—1572. Portrait of a Boy	1190	<i>F</i>
Cologne, School of, see German School.		
128 Coques or Cocx Gonzales, 1618—1684. A Family Group	821	<i>F R</i>
311 — Sight — Hearing	1114	} <i>F R</i>
	1115	
312 — Feeling — Smell	1116	
	1117	} <i>F R</i>
426 — Taste	1118	
129 Cordelle Agii or Cordegliaghi, Andrea. The Mystic Marriage of St. Catherine	1409	<i>F R</i>
Correggio see Allegri.		
Cosimo see Piero.		
130 Cossa Francesco del. St. Vincentius Ferrer; Dominican	597	<i>F R</i>
131 Costa Lorenzo, 1460—1535. The Madonna and Child enthroned, with Angels	629	<i>F R</i>
427 Cranach Lucas, 1472—1553. Portrait of a young Lady	291	<i>F</i>

NATIONAL GALLERY LONDON

	No. of the National Gallery Catalogue	
132 Credi Lorenzo di, 1459—1537. The Virgin adoring the Infant Christ	648	<i>F R</i>
521 Cristus Petrus. Portrait of a young Man	S. C.	<i>F</i>
22 Crivelli Carlo, 1430—1500. The Annunciation	739	<i>F R</i>
133 — The Madonna and Child enthroned, with St. Jerome and St. Sebastian.	724	<i>F R</i>
313 — The Madonna and Child enthroned, surrounded by Saints	788	<i>F R I</i>
23 Cuyp Aelbert, 1620—1691. Landscape, with Cattle and Figures: Evening	53	<i>F R</i>
24 — A Man's Portrait	797	<i>F R</i>
314 — River Scene with Cattle	823	<i>F R</i>
428 — Horseman and Cows in a Meadow: Evening	822	<i>F</i>
429 — Ruined Castle in a Lake	824	<i>F</i>
315 David Gheeraert, ?—1523. A Canon and his Patron Saints	1045	<i>F R</i>
316 — The Mystic Marriage of St. Catherine	1432	<i>F R I</i>
134 Decker Cornelius Gerritz, ?—1678. Landscape with Figures	1341	<i>F R</i>
430 Delen Dirck van, 1607—1673. Extensive Palatial Buildings of Renaissance architecture	1010	<i>F</i>
317 Dobson William, 1610—1646. Portrait of Endymion Porter, Groom of the Bedchamber to Charles I	1249	<i>F R</i>
135 Dolci Carlo, 1616—1686. Virgin and Child	934	<i>F R I</i>
136 Donck G. Portraits of Jan van Hensbeeck and his wife Maria Koeck	1305	<i>F R</i>

NATIONAL GALLERY LONDON

	No. of the National Gallery Catalogue	
137 Dosso Dossi Giovanni , 1479—1542. A Muse instructing a Court Poet (?)	1234	<i>F R</i>
138 Don Gerard , 1613—1675. The Poulterer's Shop	825	<i>F R</i>
431 Duccio di Buoninsegna , 1260—? The Madonna and Child, with Angels	566	<i>F</i>
432 — The Annunciation	1139	<i>F</i>
433 — Christ healing the Blind	1140	<i>F</i>
434 — The Transfiguration	1330	<i>F</i>
318 Dughet Gaspard , called <i>Gaspard Poussin</i> , 1613—1675. An Italian Landscape	161	<i>F R</i>
319 — The Calling of Abraham	1159	<i>F R</i>
25 Dutch School . XVII. Century. Portrait of a Boy	1137	<i>F R</i>
139 — Portrait of a young Man	1243	<i>F R</i>
140 — Interior of an Art Gallery	1287	<i>F R I</i>
141 — Amsterdam Musketeers on Parade	1343	<i>F R</i>
142 — An Old Woman Sewing	1397	<i>F R</i>
143 Duyster William Cornelisz , 1599—1635. Soldiers quarrelling over their Booty	1386	<i>F R</i>
144 — Players at Tric-Trac	1387	<i>F R</i>
145 Dyck Sir Anthony van , 1599—1641. Portrait of an Artist (?)	49	<i>F R</i>
146 — The Emperor Theodosius refused admission into the Church by St. Ambrose	50	<i>F R</i>
147 — Portrait of Cornelius Van der Geest	52	<i>F R I</i>
148 — The Miraculous Draught of Fishes	680	<i>F R</i>
320 — An Equestrian Portrait of Charles I., King of England	1172	<i>F R I</i>

NATIONAL GALLERY LONDON

	No. of the National Gallery Catalogue	
435 Dyck Sir Anthony van . His own Portrait	877	<i>F</i>
149 Eyck Jan van , 1390—1440. Portraits of a Flemish Merchant and Lady	186	<i>F R I</i>
436 — A Man's Portrait	222	<i>F</i>
437 — A Man's Portrait	290	<i>F</i>
321 Fabritius Bernhard . The Adoration of the Shepherds	1338	<i>F R</i>
322 Ferrari Gaudenzio , 1481—1547. The Resurrection	1465	<i>F R I</i>
26 Filipepi Sandro , called <i>Botticelli</i> , 1447—1510. The Virgin and Child	275	<i>F R I</i>
26a — — dto. — Detail		<i>F R</i>
27 — Mars and Venus	915	<i>F R</i>
28 — The Virgin and Child, St. John the Baptist, and Angels	226	<i>F R I</i>
150 — Venus reclining, with Cupids	916	<i>F R I</i>
151 — The Nativity of the Saviour	1034	<i>F R</i>
323 — The Assumption of the Virgin	1126	<i>F R I</i>
324 Fiorenzo di Lorenzo . The Virgin and Child with Saints and Angels	1103	<i>F R</i>
152 Flemish School . XV. and early XVI. Centuries. Portraits of a Man and his wife	653	<i>F R</i>
325 — The Madonna and Child enthroned	774	<i>F R</i>
326 — The Exhumation of St. Hubert, Bishop of Liege	783	<i>F R</i>
327 — The Deposition from the Cross	1078	<i>F R</i>
328 — The Adoration of the Kings	1079	<i>F R</i>
329 — The Legend of St. Giles	1419	<i>F R</i>
438 — The Madonna and Infant Christ	709	<i>F</i>

NATIONAL GALLERY LONDON

	No. of the National Gallery Catalogue	
439 Flemish School. Portrait of a Monk	710	F
440 — Portrait of a Man	943	F
522 — A Lady as Mary Magdalene	S. C.	F
523 Florentine School. The Holy Family	S. C.	F
153 Foppa Vincenzo, ?—1492. The Adoration of the Kings	729	F R
29 Francesca Piero della, 1415—1492. Portrait of a Lady	758	F R
154 — The Baptism of Christ in the River Jordan .	665	F R
155 — The Nativity of Our Lord	903	F R I
156 — Portrait	585	F R
Francia see Raibolini.		
330 Fungai Bernardino, ?—1516. The Virgin and Child surrounded by Cherubim	1331	F R
331 Gellée Claude, called <i>Le Lorrain</i> , 1600—1682. Landscape, with Figures	12	F R
332 — Seaport with Figures	14	F R
441 — Seaport with the Embarkation of St. Ursula	30	F
442 — Landscape with Figures	61	F
333 German School. School of Cologne. XIV—XV. Century. The Sancta Veronica	687	F R
520 — The Virgin and Child	S. C.	F R
334 — (?) Westphalian School, XV. Century. The Crucifixion	1049	F R
443 — The Death of the Virgin	658	F
335 Ghirlandaio Domenico del, 1449—1494. Portrait of a Youth	1299	F R
444 — Portrait of a Girl	1230	F

NATIONAL GALLERY LONDON

	No. of the National Gallery Catalogue	
524 Ghirlandaio Domenico del, Constanza di Medicis .	S. C.	F R
30 Ghirlandaio Ridolfo del, 1483—1561. The Procession to Calvary	1143	F
Giorgione see Barbarelli.		
157 Giotto. Two Apostles	276	F R
31 — <i>School of Giotto</i> The Coronation of the Virgin	568	F R
Giovanni di Pietro see Lo Spagna.		
32 Girolamo dai Libri, 1474—1556. The Madonna, Infant Christ, and St. Anne	748	F R I
384 Girolamo da Santacroce, A Saint reading — A Saint	632 633	} F R
158 Gossart Jan, called <i>Jean de Mabuse</i> 1470—1541. A Man's Portrait	656	F R
159 Goyen Jan van, 1596—1656. A River Scene . .	151	F R
160 — A Winter Scene	1327	F R
161 Gozzoli Benozzo, 1420—1498. The Rape of Helen, wife of Menelaus, King of Sparta	591	F R
33 Grandi, Ercole di Giulio Cesare, ?—1531. The Madonna and Child with Saints	1119	F R I
162 Greuze Jean Baptiste, 1725—1805. Head of a Girl, looking up	1019	F R
163 — Girl with an Apple	1020	F R
336 — A young Girl carrying a Lamb	1154	F R
445 — The Head of a Girl	206	F R
525 — Devotion	S. C.	F R
Grien see Baldung.		
337 Guardi Francesco, 1712—1793. View of the Church, Campanile, and Piazza of San Marco, at Venice	210	F R

NATIONAL GALLERY LONDON

	No. of the National Gallery Catalogue	
446 Guardi Francesco , View in Venice	1054	<i>F</i>
338 Hackaert Jan , 1629—1696. A Stag Hunt	829	<i>F R</i>
164 Hals Dirk , ?—1656, A merry party of Cavaliers and Ladies at table	1074	<i>F R</i>
34 Hals Frans , 1580—1666. Portrait of a Man	1251	<i>F R I</i>
165 — Portrait of a Woman	1021	<i>F R I</i>
166 Helst Bartholomaeus van der , 1611—1670. Portrait of a young Lady	1248	<i>F R</i>
167 Heyden Jan van der , 1637—1712. Architectural Scene	992	<i>F R</i>
35 Hobbema Meindert , 1638—1709. Landscape. Showery Weather	685	<i>F R</i>
36 — The Avenue, Middelharnis, Holland	830	<i>F R I E</i>
168 — Ruins of Brederode Castle	831	<i>F R</i>
169 — A Village, with Watermills	832	<i>F R</i>
170 — Woody Landscape	995	<i>F R</i>
171 Holbein Hans the younger , 1497-1543. The Ambassadors	1314	<i>F R Facs.</i>
339 — Christina, Princess of Denmark and widow of Francesco Sforza Duke of Milan		<i>F R I</i>
528 — Portrait of a Lady	—	<i>F R I</i>
529 — A Man's Portrait	—	<i>F R I</i>
340 Hondecoeter Melchior de , 1636-1695. Domestic Poultry	202	<i>F R</i>
447 Honthorst Gerard van , 1590—1656. Peasants warming themselves	1444	<i>F</i>
37 Hooch Pieter de , 1630—1677. The Courtyard of a Dutch House	794	<i>F R I</i>
38 — Court of a Dutch House	835	<i>F R I</i>

NATIONAL GALLERY LONDON

	No. of the National Gallery Catalogue	
172 Hooch Pieter de . Interior of a Dutch House	834	<i>F R I</i>
173 Huysman Jacob , 1656—1696. Portrait of Izaak Walton	125	<i>F R</i>
39 Huysum Jan van , 1682—1749. A Vase with Flowers	796	<i>F R</i>
174 Janssens Cornelis van Ceulen , 1594—1664. Portrait of Cornelia Remoens	1321	<i>F R</i>
448 — Portrait of Aglonius Voon	1320	<i>F</i>
449 Jardin Karel du , 1622—1678. Figures and Animals in a meadow	826	<i>F</i>
175 Italian School, XVI. Century . Portrait of a Cardinal seated	1048	<i>F R</i>
176 Justus of Padua , ?—1400. The Coronation of the Virgin	701	<i>F R</i>
450 — A Triptych, the exterior sides of the wings.	701	<i>F</i>
177 Keyser Thomas de , 1596—1667. A Merchant and his Clerk	212	<i>F R</i>
178 Koninck Philips de , 1619—1688. Landscape, a view in Holland	836	<i>F R</i>
451 Lancret Nicolas , 1690—1743. Infancy	101	<i>F</i>
452 — Youth	102	<i>F</i>
453 — Manhood	103	<i>F</i>
454 — Age	104	<i>F</i>
40 Lanini Bernardino , 1508—1578. The Holy Family	700	<i>F R</i>
341 Lely Peter , 1618—1680. A Full-length Portrait of a Girl	1016	<i>F R</i>
455 Le Nain , 15?—1648. Portrait Group	1425	<i>F</i>
Leonardo see da Vinci.		

NATIONAL GALLERY LONDON

	No. of the National Gallery Catalogue	
179 Liberale da Verona , 1451—1535. The Madonna and Child, attended by Angels	1134	<i>FR</i>
180 — (<i>Ascribed to.</i>) The Death of Dido	1336	<i>FR</i>
181 Lievens Jan , 1607—1674. Portrait of Anna Maria Schurmann	1095	<i>FR</i>
41 Lippi Fra Filippo , 1406—1469. The Annunciation	666	<i>FR</i>
182 — The Vision of St. Bernard	248	<i>FR</i>
183 — The Virgin Mary seated: an Angel presenting the Infant Christ to her	589	<i>FR</i>
184 — St. John the Baptist with six other Saints	667	<i>FR</i>
42 Lippi Filippino , 1457—1504. The Adoration of the Magi	1033	<i>FR</i>
185 — The Virgin and Child with the Infant St. John	1412	<i>FR</i>
342 — The Adoration of the Magi or the Wise Men offering	592	<i>FR</i>
343 — The Adoration of the Magi	1124	<i>FR</i>
456 — St. Francis in Glory, with the Stigmata	598	<i>F</i>
534 — An Angel adoring	927	<i>FR</i>
344 Longhi Pietro , 1702—1762. The Exhibition of a Rhinoceros in an Arena	1101	<i>FR</i>
345 — The Fortune Teller	1334	<i>FR</i>
457 — A Domestic Group	1100	<i>FR</i>
186 Lorenzo da San Severino . The mystic Marriage of St. Catharine	249	<i>FR</i>
43 Lotto Lorenzo , 1480—1555. Portrait of Agostino and Niccolo della Torre	699	<i>FR</i>

NATIONAL GALLERY LONDON

	No. of the National Gallery Catalogue	
44 Lotto Lorenzo . A Family Group	1047	<i>FR</i>
45 — Portrait of the Prothonotary Apostolic Juliano	1105	<i>FR</i>
59 Luciani Sebastiano , called <i>Fra Sebastiano del Piombo</i> , 1485—1547. The Holy Family	1450	<i>FR</i>
216 — The Resurrection of Lazarus	1	<i>FR</i>
346 Lucidel Nicolas , 1527—?. Portrait of a young German Lady	184	<i>FR</i>
Luigi, Andrea di see Andrea.		
187 Luini Bernardino , 1475—?. Christ disputing with the Doctors (or the Pharisees?)	18	<i>FR I</i>
347 Lundens Gerrit , 1622—? The March-out of a Company of the Amsterdam Musketeers	289	<i>FR</i>
Mabuse see Gossart.		
193 Maes Nicolas , 1632—1693. The idle Servant	207	<i>FR</i>
194 — The Card Players	1247	<i>FR</i>
195 — Portrait of a Man	1277	<i>FR</i>
460 — The Dutch Housewife	159	<i>F</i>
188 Mantegna Andrea , 1431—1506. The Triumph of Scipio	902	<i>FR</i>
189 — Two Female Figures, probably personifying Summer and Autumn	1125	<i>FR</i>
190 — The Agony in the Garden	1417	<i>FR</i>
348 — The Virgin and Child enthroned, St. John the Baptist and the Magdalene	274	<i>FR</i>
458 — Samson and Delilah	1145	<i>F</i>

NATIONAL GALLERY LONDON

	No. of the National Gallery Catalogue	
459 Mantegna Francesco, 1470—1517. The Holy Women at the Sepulchre	1381	F R
Mantovano see Rinaldo.		
351 Maratti Carlo, 1625—1713. Portrait of Cardinal Cerri, seated	174	F R
191 Margaritone di Magno, 1216—1293. The Virgin and Child with Scenes from the Lives of the Saints	564	F R
383 Marinus van Romerswael, 1497—?. Two Bankers or Usurers in their office	944	F R
192 Marziale Marco, The Madonna and Child enthroned, with Saints	804	F R
352 Massys Quinten. 1460?—1530. Salvator Mundi, and the Virgin Mary	295	F R I
196 Matteo di Giovanni, 1435—1495. The Assumption of the Virgin	1155	F R
461 — St. Sebastian	1461	F
353 Mazo Martinez Juan Bautista del, 1610—1667. Portrait of a Man	1308	F R
197 Mazzola Filippo, ?—1505. The Virgin and Child with two Saints	1416	F R
46 Mazzolino Ludovico da Ferrara, 1480—1528. The Holy Family	169	F R
47 Melozzo da Forli, 1438—1494. Music (?)	756	F R
198 — Rhetoric (?)	755	F R
354 Memlinc Hans, 1430—1494. The Virgin and Infant Christ enthroned, in a Garden	686	F R
355 — (<i>Ascribed to.</i>) St. John the Baptist, holding a Lamb on his left Arm.	747	F R

NATIONAL GALLERY LONDON

	No. of the National Gallery Catalogue	
48 Merian Mattheaus, 1621—1687. Portrait of a Man	1012	F R
199 Metsu Gabriel, 1630—1667. The Duet	838	F R
356 — The Music Lesson	839	F R
463 — The drowsy Landlady	970	F
200 Meulen Adam Frans van der, 1632—1690. A Hunting Party	1447	F R
Michelangelo see Buonarrotti.		
464 Mieris Frans van, senior, 1635—1681. A Lady in a Crimson Jacket	840	F
201 Mieris Willem van, 1662—1747. A Fish and Poultry Shop	841	F R
49 Milanese School. XV. or early XVI. Century. The Head of St. John the Baptist	1438	F R
357 — The Virgin and Child	1300	F R
202 Molenaer Jan Miense, 1610—1668. Musical Pastime	1293	F R I
50 Montagna Bartolommeo, 1450—1523. The Madonna and Child	802	F R
358 Mor or Moro Antony, 1512—1578? Portrait of a Man	1231	F R
359 Morando Paolo, 1486—1522. St. Rock with the Angel	735	F R
465 Morone Domenico, 1442—?. Scene at a Tournament	1211	F
466 — Scene at a Tournament	1212	F
51 Moroni Giambattista, ?—1578. Portrait of a Tailor	697	F R I E
52 — Portrait of a Lawyer	742	F R I
53 — Portrait of an Italian Lady	1023	F R
54 — Portrait of an Italian Nobleman	1316	F R

NATIONAL GALLERY LONDON

	No. of the National Gallery Catalogue	
203 Moroni Giambattista. Portrait of an Italian Nobleman	1022	<i>F R</i>
467 — Portrait of an Italian Ecclesiastic	1024	<i>F</i>
204 Murillo Bartolomé Estéban, 1618 - 1682. A Spanish Peasant Boy	74	<i>F R</i>
205 — The Nativity of the Virgin	1257	<i>F R</i>
206 — A Boy drinking	1286	<i>F R I</i>
360 — The Holy Family	13	<i>F R I</i> <i>Facs.</i>
361 — Head of Christ from the "Holy Family"		<i>F R I</i>
362 — St. John and the Lamb	176	<i>F R I</i>
207 Neeffs Pieter, 1577-1661. The Interior of a Church	924	<i>F R</i>
208 Neer Aart van der, 1603-1677. A Landscape, with Figures and Cattle, Evening	152	<i>F R</i>
209 — Landscape with Figures; a Canal Scene, Holland	732	<i>F R</i>
210 — A Frost Scene	1288	<i>F R</i>
468 — River Scene by Moonlight, with Shipping	239	<i>F</i>
469 — Frost Scene	969	<i>F</i>
470 Netscher Caspar, 1639-1684. Blowing Bubbles	843	<i>F</i>
471 — Maternal Instruction	844	<i>F</i>
472 — Lady seated at a Spinning Wheel	845	<i>F</i>
211 Niccolò da Fuligno, 1430-1492. The Crucifixion (a Triptych)	1107	<i>F R</i>
55 Orcagna, 1308-1368. The Coronation of the Virgin, Angels and Saints in adoration	569	<i>F R</i>
473 Orley Barent van, 1491-1542. The Magdalene reading	655	<i>F</i>

NATIONAL GALLERY LONDON

	No. of the National Gallery Catalogue	
363 Orsi Lelio, 1511-1586. The Walk to Emmaus	1466	<i>F R</i>
56 L'Ortolano, ?-1525. St. Sebastian, St. Rock and St. Demetrius	669	<i>F R</i>
474 Ostade Adriaan Jansz van, 1610-1635. The Alchemist	846	<i>F</i>
475 Ostade Isaak van, 1621-1649. A Frozen River	963	<i>F</i>
476 — Village Scene	847	<i>F</i>
477 — Frost Scene	848	<i>F</i>
364 Pacchia Girolamo del, Madonna and Child	246	<i>F R</i>
57 Palma Jacopo, 1480-1528. Portrait of a Poet.	636	<i>F R</i>
212 Pape Abraham de, ?-1666. Interior of a Cottage with figures	1221	<i>F R</i>
479 Patinir or Patinier Joachim, 14?-1524. A Nun	945	<i>F</i>
478 Parmigiano, 1503-1540. The Vision of St. Jerome	33	<i>F R</i>
Perugino see Vanucci.		
365 Peruzzi Baldassare, 1481-1536. The Adoration of the Magi	218	<i>F R</i>
480 — The Adoration of the Kings	167	<i>F</i>
481 Pesellino Francesco, 1422-1457. A Trinità	727	<i>F</i>
213 Piero di Cosimo, 1462-1521. Portrait of the Florentine General, Francesco Ferrucci, in Armour	895	<i>F R</i>
214 — The Death of Procris	698	<i>F R</i>
Piero della Francesca see Francesca.		
58 Pinturicchio, 1454-1513. The Return of Ulysses to Penelope	911	<i>F R</i>

NATIONAL GALLERY LONDON

	No. of the National Gallery Catalogue	
215 Pinturicchio . The Madonna and Child	703	<i>FR</i>
Piombo Sebastiano del see Luciani.		
217 Pippi Giulio , 1492—1546. The Infancy of Jupiter .	624	<i>FR</i>
60 Pisano Vittore , 1380—1451. St. Anthony and St. George in Conversation	776	<i>FR</i>
366 — The Vision of St. Eustace	1436	<i>FR</i>
218 Poel Egbert van der , 1621—1664. View near Delft after the Explosion of a Powder Mill on Oc- tober 12, 1654	1061	<i>FR</i>
482 Poelenburgh Cornelis van , 1586—1667. A Ruin, Women bathing	955	<i>F</i>
219 Pollaiuolo Antonio , 1429—1498. The Martyrdom of St. Sebastian	292	<i>FR</i>
61 Ponte Jacopo da , 1510—1592. The Good Samaritan	277	<i>FR</i>
367 — Christ driving the Money Changers out of the Temple	228	<i>FR</i>
220 Pontormo Jacopo da , 1494—1557. Joseph and his Kindred in Egypt	1131	<i>FR</i>
368 — Portrait of a Boy	649	<i>FR</i>
221 Pot Hendrik Gerritsz , 1600—1656. A Convivial Party	1278	<i>FR</i>
62 Potter Paulus , 1625—1654. Landscape with Cattle	849	<i>FR</i>
222 — The Old Grey Hunter	1009	<i>FR</i>
369 Poussin Nicolas , 1594—1665. A Bacchanalian Festival	42	<i>FR</i>
370 — A Bacchanalian Dance	62	<i>FR</i>
371 — Venus sleeping, surprised by Satyrs	91	<i>FR</i>
Poussin Gaspard see Dughet.		

NATIONAL GALLERY LONDON

	No. of the National Gallery Catalogue	
Predis see Ambrogio.		
223 Previtali Andrea , ?—1528. Madonna and Child seated	695	<i>FR</i>
63 Raibolini Francesco , commonly called <i>Francia</i> , 1450—1517. The Virgin with the Infant Christ, and St. Anne enthroned, surrounded by Saints	179	<i>FR I</i>
64 — The Virgin and two Angels weeping over the dead body of Christ	180	<i>FR I</i>
65 — The Virgin and Child, with two Saints . . .	638	<i>FR I</i>
Raphael see Sanzio.		
224 Ravesteijn Jan Anthonisz , 1572—1657. Portrait of a Lady	1423	<i>FR</i>
66 Rembrandt van Rijn , 1606—1669. Portrait of a Woman	237	<i>FR</i>
225 — The Woman taken in Adultery	45	<i>FR</i>
226 — Portrait of a Jew Merchant	51	<i>FR I</i>
227 — A Woman Bathing	54	<i>FR I</i>
228 — A Jewish Rabbi	190	<i>FR I</i>
229 — The Painter's own Portrait	221	<i>FR I</i>
230 — A Man's Portrait	243	<i>FR I</i>
231 — A Man's Portrait	850	<i>FR I</i>
232 — Portrait of an Old Lady	775	<i>FR I</i>
233 — Portrait of Himself	672	<i>FR I</i> <i>Facs. E</i>
372 — The Adoration of the Shepherds	47	<i>FR</i>
373 — Landscape, with Figures	72	<i>FR</i>
374 — Portrait of a Capuchin Friar	166	<i>FR</i>
375 — Christ before Pilate	1400	<i>FR</i>

NATIONAL GALLERY LONDON

	No. of the National Gallery Catalogue	
483 Rembrandt van Rijn , Christ taken down from the Cross	43	<i>F</i>
67 — <i>School of Rembrandt van Rijn</i> . Christ blessing Little Children	757	<i>FR</i>
234 Reni Guido , 1575—1642. The Youthful Christ embracing St. John	191	<i>FR I</i>
235 — The "Ecce Homo"	271	<i>FR</i>
376 — The Magdalene	177	<i>FR I</i>
377 — Lot and his Daughters leaving Sodom	193	<i>FR</i>
378 — Susannah approached by the two Elders, in the garden of her husband Joachim, at Babylon	196	<i>FR</i>
379 — The Coronation of the Virgin	214	<i>FR</i>
380 Ribera Josef , 1588—1656. The Dead Christ	235	<i>FR</i>
349 Rinaldo Mantovano . The Capture of Carthagena, and the Continnence of Publius Cornelius Scipio	643	<i>FR</i>
350 — The Abduction of the Sabine Women; and the Reconciliation between the Romans and the Sabines	644	<i>FR</i>
236 Roberti Ercole de , 1450—1496. The Adoration of the Shepherds. The Dead Christ (a Pietà)	1411	<i>FR</i>
484 — The Israelites gathering Manna in the Wilderness	1217	<i>FR</i>
68 Robusti Jacopo , called <i>Tintoretto</i> , 1518—1594. St. George destroying the Dragon	16	<i>FR</i>
69 — The Origin of "The Milky Way"	1313	<i>FR</i>
381 Roghman Roeland , 1597—?. Landscape	1340	<i>FR</i>
382 Romanino , 1487—1556. The Nativity	297	<i>FR I</i>
Romerswael see Marinus.		

NATIONAL GALLERY LONDON

	No. of the National Gallery Catalogue	
486 Rosselli Cosimo , 1439—1507. St. Jerome in the Desert, kneeling before a Crucifix	227	<i>F</i>
487 Rossi Francesco , 1510—1563. Charity	652	<i>F</i>
488 Rottenhammer Johann , 1564—1623. Pan and Syrinx	659	<i>F</i>
70 Rubens Peter Paul , 1577—1640. Peace and War	46	<i>FR I</i>
71 — The Judgement of Paris	194	<i>FR I</i>
72 — The Triumph of Silenus	853	<i>FR I</i>
239 — The Abduction of the Sabine Women	38	<i>FR I</i>
240 — The Conversion of St. Bavon	57	<i>FR</i>
241 — The Brazen Serpent	59	<i>FR I</i>
242 — A Landscape, with a View of the Chateau de Stein	66	<i>FR</i>
243 — A Holy Family, with Saint George, and other Saints	67	<i>FR</i>
244 — The Apotheosis of William the Taciturn, of Holland	187	<i>FR</i>
245 — The Triumph of Julius Caesar	278	<i>FR I</i>
246 — The Horrors of War	279	<i>FR</i>
247 — Portrait known as the: "Chapeau de Paille"	852	<i>FR I</i>
489 — A Landscape: Sunset	157	<i>F</i>
73 Ruisdael Jacob van , 1628—1682. Landscape with Waterfall	627	<i>FR</i>
74 — Landscape with Waterfall	737	<i>FR</i>
248 — Landscape with Waterfall	628	<i>FR</i>
249 — The Watermills	986	<i>FR</i>
250 — Rocky Landscape with Torrent	987	<i>FR</i>

NATIONAL GALLERY LONDON

	No. of the National Gallery Catalogue	
251 Ruisdael Jacob van. Landscape: an extensive flat wooded Country	990	<i>F R</i>
252 — View on the Shore at Scheveningen	1390	<i>F R</i>
490 — A Waterfall	855	<i>F</i>
Salvi see Sassoferrato.		
75 Santi Giovanni, ?—1491. Madonna and Child	751	<i>F</i>
Santacroce see Girolamo.		
76 Sanzio Raffaello, 1483—1520. Portrait of Julius II., seated in a chair	27	<i>F R</i>
77 — St. Catherine of Alexandria	168	<i>F R I</i>
78 — The Virgin and Child attended by St. John the Baptist and St. Nicolas of Bari	1171	<i>F R I</i>
254 — The Madonna, Infant Christ, and St. John	744	<i>F R</i>
491 — The Vision of a Knight	213	<i>F</i>
79 — <i>After Raffaello Sanzio.</i> The Madonna and Child	929	<i>F R I</i>
255 Sarto Andrea del, 1486—1531. Portrait of Himself	690	<i>F R I</i>
385 — The Holy Family	17	<i>F R</i>
253 Sassoferrato Giovanni Battista Salvi, called, 1605—1685. The Madonna in Prayer	200	<i>F R I</i>
386 — The Madonna and Infant Christ	740	<i>F R</i>
80 Savoldo Giovanni Girolamo, 1480—1550. Mary Magdalene approaching the Sepulchre	1031	<i>F R</i>
492 Schalcken Godfried, 1643—1706. An Old Woman	997	<i>F</i>
493 — A Duet or Singing Lesson	998	<i>F*</i>

NATIONAL GALLERY LONDON

	No. of the National Gallery Catalogue	
494 Schiavone Gregorio. The Madonna and Child enthroned with various Saints	630	<i>F</i>
495 — Madonna and Infant Christ	904	<i>F</i>
496 Scorel Jan van, 1495—1562. Portrait of a Lady	721	<i>F</i>
Sebastiano del Piombo see Luciani.		
81 Signorelli Luca, 1441—1523. The Circumcision	1128	<i>F R I</i>
82 — The Nativity	1133	<i>F R I</i>
256 — The Triumph of Chastity	910	<i>F R</i>
387 Snyders Frans, 1579—1657. A Fruit-piecc	1252	<i>F R</i>
257 Snyers Pieter, 1681—1752. A Study of Still Life	1401	<i>F R</i>
83 Solario Andrea da, 1460—1515. Portrait of a Venetian Senator	923	<i>F R</i>
258 — Portrait of Gio. Christoforo Longono	734	<i>F R</i>
497 Sorgh Hendrik Martenz, 1611—1670. Boors at Cards	1055	<i>F</i>
498 — Group of Two Figures drinking	1056	<i>F</i>
84 Spagna Lo, ?—1530. The Agony in the Garden	1032	<i>F R</i>
259 Steen Jan, 1626—1679. A Terrace Scene, with Figures	1421	<i>F R</i>
388 — The Music Master	856	<i>F R</i>
499 Steenwyck Hendrik junior, 1580—1649? Interior of a Church	1443	<i>F</i>
260 Tacconi Francesco. The Virgin enthroned, holding the Child upon her Knee	286	<i>F R</i>
261 Teniers David the younger, 1610—1690. Players at Tric-Trac, or Backgammon	242	<i>F R</i>
262 — An Old Woman peeling a Pear	805	<i>F R</i>

NATIONAL GALLERY LONDON

	No. of the National Gallery Catalogue	
263 Teniers David the younger. The Château of Teniers at Perck	817	<i>F R</i>
264 — The Village Fête, or the Fête aux Chaudrons	952	<i>F R</i>
389 — The Misers, or Money-changers	155	<i>F R</i>
390 — Spring. Summer	857	} <i>F R</i>
	858	
391 — Autumn. Winter	859	} <i>F R</i>
	860	
392 — The Surprise	862	<i>F R</i>
500 — A Music Party	154	<i>F</i>
501 — Boors Regaling	158	<i>F</i>
502 — River Scene	861	<i>F</i>
85 Terborch or Terburg Gerard , 1614—1681. The "Guitar Lesson"	864	<i>F R I</i>
265 — The Peace of Münster	896	<i>F R</i>
266 — Portrait of a Gentleman	1399	<i>F R</i>
393 Theotocopuli Domenico , 1548—1625. Christ driving out the Traders from the Temple	1457	<i>F R</i>
503 — St. Jerome	1122	<i>F</i>
504 Tiepolo Giovanni Battista , 1692—1769. Design for an Altar-piece (?)	1192	<i>F</i>
505 — Design for an Altar-piece (?)	1193	<i>F</i>
506 — The deposition from the Cross	1333	<i>F</i>
Tintoretto see Robusti.		
86 Tisio Benvenuto da Garofalo , 1481—1559. The Vision of St. Augustin	81	<i>F R</i>
87 — The Madonna and Child enthroned, under a Canopy	671	<i>F R I</i>

NATIONAL GALLERY LONDON

	No. of the National Gallery Catalogue	
Titian see Vecellio.		
267 Tura Cosimo , 1420—1495. The Madonna and Child enthroned	772	<i>F R</i>
88 Tuscan School. XV. Century. The Angel Raphael accompanies Tobias on his Journey into Media, to marry Sara, the daughter of Raguel	781	<i>F R</i>
268 — The Virgin adoring the Infant Christ	296	<i>F R</i>
507 — A Combat between Amor and Castitas	1196	<i>F</i>
394 Ubertini Francesco , 1494—1557. The History of Joseph (Part. I.)	1218	<i>F R</i>
269 — The History of Joseph (Part. II.)	1219	<i>F R</i>
404 Uccello Paolo , 1397—1475. The Battle of Sant' Egidio. July 7. 1416.	583	<i>F R</i>
395 Umbrian School, XV.—XVI. Century. The Story of Griselda, from Boccaccios Decameron.	912	<i>F R</i>
396 — The Story of Griselda	913	<i>F R</i>
270 Valdes Leal, Juan de , 1630—1691. The Assumption of the Virgin	1291	<i>F R</i>
89 Vannucci Pietro , commonly called <i>Perugino</i> , 1446-1523. The Virgin and Infant Christ, with St. John	181	<i>F R</i>
90 — The Virgin adoring the Infant Christ: The Archangel Michael: The Archangel Raphael and Tobias	288	<i>F R</i>
91 — The Virgin and Child with St. Jerome and St. Francis	1075	<i>F R</i>
92 — Baptism of Our Lord.	1431	<i>F R</i>
508 Varotari Alessandro , 1590—1650. Boy with a Bird	933	<i>F</i>
93 Vecellio Tiziano , 1477—1576. A Concert or a Maestro di Cappella giving a Music Lesson	3	<i>F R</i>

NATIONAL GALLERY LONDON

	No. of the National Gallery Catalogue	
94 Vecellio Tiziano , Venus and Adonis	34	<i>F R I</i>
95 — Bacchus and Ariadne	35	<i>F R I</i>
96 — Christ appearing to Mary Magdalene after his Ressurrection	270	<i>F R</i>
97 — The Madonna and Child with St. John the Baptist, and St. Catherine embracing the Divine Infant	635	<i>F R I</i>
271 — A Holy Family	4	<i>F R</i>
272 — <i>School of Vecellio</i> . The Rape of Ganymede	32	<i>F R</i>
273 Velazquez Don Diego de Silva y , 1599—1660. Philip IV. of Spain hunting the Wild Boar	197	<i>F R</i>
274 — Christ at the Column	1148	<i>F R</i>
397 — The Nativity, or Adoration of the Shepherds	232	<i>F R</i>
398 — A Dead Warrior	741	<i>F R</i>
399 — Philipp IV. King of Spain	745	<i>F R I</i>
400 — Portrait of Philipp IV. King of Spain	1129	<i>F R I</i>
401 — Portrait of the Spanish Admiral Pulido-Pareja	1315	<i>F R I E</i>
401a — — dto. — Bust		<i>F</i>
402 — Christ in the House of Martha	1375	<i>F R</i>
403 — A Betrothal	1434	<i>F R</i>
275 Velde Adriaen van de , 1635—1672. Landscape, with a Goat and Kid	1348	<i>F R</i>
509 — The Farm Cottage	867	<i>F</i>
510 — Frost Scene	869	<i>F</i>
276 Velde Willem van de , the younger, 1633—1693. Coast Scene, a Calm	871	<i>F R</i>

NATIONAL GALLERY LONDON

	No. of the National Gallery Catalogue	
277 Velde Willem van de , the younger. River Scene	978	<i>F R</i>
511 — A Gale	876	<i>F</i>
98 Venetian School . <i>XV.—XVI. Century</i> . Venus and Adonis	1123	<i>F R</i>
278 — Portrait of a Lady	595	<i>F R</i>
512 — Portrait of a young Man	1121	<i>F</i>
526 — Portrait of a young Man	S. C.	<i>F</i>
279 Venusti Marcello , ?—1580. The Holy Family	1127	<i>F R</i>
99 Vermeer or van der Meer of Delft Jan , 1632—1675. A young Lady at a Spinet	1383	<i>F R</i>
405 Vernet Claude Joseph , 1714—1789. Castle of Sant' Angelo, Rome	236	<i>F R</i>
405 — View of a Mediterranean Sea-port	1393	<i>F R</i>
Veronese Paolo see Caliarì.		
280 Victors Jan , 1620—1672. The Village Cobbler	1312	<i>F R</i>
100 Vinci Leonardo da , 1452—1519. The Virgin of the Rocks	1093	<i>F R I</i>
527 — The Virgin and Child (<i>from the Cook Collection</i>)		<i>F R</i>
281 Vivarini Antonio , ?—1470. Saints Peter and Jerome	768	<i>F R</i>
282 — St. Francis and St. Mark	1284	<i>F R</i>
283 Vliet Willem van der , 1584—1642. Portrait of a Jesuit	1168	<i>F R</i>
407 Weyden Rogier van der , 1400—1464. The Depo- sition in the Tomb	664	<i>F R</i>
513 — Mater Dolorosa	711	<i>F</i>
514 — Ecce Homo	712	<i>F</i>

NATIONAL GALLERY LONDON

	No. of the National Gallery Catalogue	
515 Weyden Rogier van der. <i>Later School of van der Weyden. The Magdalene</i>	654	F
284 Wouwerman Philips, 1619—1668. Interior of a Stable	879	F R
408 Wynants Jan, 16?—16?. Landscape	883	F R
409 Zais Guiseppe, ?—1784. A Rural Landscape	1296	F
410 — A River-side Scene	1297	F R
285 Zurbaran Francisco, 1598—1662. A Franciscan Monk	230	F R

NATIONAL GALLERY LONDON

BRITISH AND MODERN SCHOOLS

NOTICE: The subjects marked „T“ have been transferred to the „TATE“ Gallery.

	No. of the National Gallery Catalogue	
55 Augustus W. Callcott. Dutch Peasants returning from Market	340	F R
1 John Constable. The Hay-Wain	1207	F R
2 — Flatford Mill, on the River Stour	1273	F R
56 — The Corn Field, or Country Lane	130	F R I Facs.
57 — The Valley Farm	327	F R I Facs.
58 — The Cenotaph	1272	F R
39 John S. Copley. The Siege and Relief of Gibraltar	787	F R
60 Francis Cotes. Portrait of Mrs. Brocas	1281	F R
3 John Sell Cotman. A Galiot in a Gale	1458	F R
4 Arthur William Devis. Portrait of Marianna Augusta Cockburn	1369	F R
61 William Dyce. St. John leading the Virgin Mary from the Tomb	1426	F R I
62 John Laurens Dyckmans. The Blind Beggar	600	F R
T 63 Charles L. Eastlake. Christ lamenting over Jerusalem	397	F R
64 — “Ippolita Torelli”	1398	F R
T 65 Augustus L. Egg. Beatrix knighting Esmond	1385	F R
66 William Etty. Youth on the Prow and Pleasure at the Helm	356	F R
135 — The Bather, “at the Doubtful Breeze alarmed”	614	F
74 Goya Francisca. Portrait of Doña Isabel Cobos de Poroel	1473	F R

NATIONAL GALLERY LONDON

	No. of the National Gallery Catalogue	
68 Henry Fuseli. Titania and Bottom	1223	<i>F R I</i>
5 Thomas Gainsborough. Musidora bathing her Feet	308	<i>F R I</i>
6 — Woody Landscape, Sunset	310	<i>F R</i>
7 — Portrait of Mrs. Siddons	683	<i>F R I</i> <i>Facs.</i>
8 — Landscape	925	<i>F R</i>
69 — The Market Cart	80	<i>F R</i>
70 — The Watering Place	109	<i>F R</i>
71 — Portrait of Ralph Schomberg Esq. M. D. . .	684	<i>F R</i>
72 — Portrait of Orpin, Parish Clerk of Bradford, Wiltshire	760	<i>F R</i>
73 — Portraits of Mr. J. Baillie, of Ealing Grove, his Wife and Four Children	789	<i>F R I</i>
136 — Rustic Children	311	<i>F</i>
137 — Study for a Portrait	678	<i>F</i>
138 — Portrait of the Rev. Sir Henry Bate Dudley, Bart.	1044	<i>F</i>
139 — Portrait of a Young Man	1271	<i>F</i>
T 9 John F. Herring. The Frugal Meal	452	<i>F R I</i>
10 William Hogarth. The Marriage Contract	113	<i>F R</i>
11 — Shortly after Marriage	114	<i>F R</i>
12 — The Visit to the Quack Doctor	115	<i>F R</i>
13 — The Countess's Dressing Room	116	<i>F R</i>
14 — The Duel and Death of the Earl	117	<i>F R</i>
15 — The Death of the Countess	118	<i>F R</i>
16 — A Family Group	1153	<i>F R</i>

NATIONAL GALLERY LONDON

	No. of the National Gallery Catalogue	
17 William Hogarth. Sigismonda mourning over the heart of Guiscardo	1046	<i>F R</i>
18 — The Shrimp Girl	1162	<i>F R</i>
19 — Portraits of Hogarth's Servants	1374	<i>F R</i>
20 — Calais Gate	1464	<i>F R</i>
75 — His own Portrait	112	<i>F R</i>
76 — Portrait of Miss Fenton, the Actress, as "Polly Peachum" in the "Beggar's Opera"	1161	<i>F R</i>
T 77 John Hoppner. Portrait of the Countess of Oxford	900	<i>F R</i>
21 Edwin Landseer. Spaniels of King Charles's Breed	409	<i>F R</i>
22 — High Life — Low Life	410	<i>F</i>
23 — Highland Music	411	<i>F R</i>
24 — The Hunted Stag	412	<i>F R I</i>
25 — The sleeping Bloodhound	603	<i>F R</i>
26 — Dignity and Impudence	604	<i>F R I</i>
27 — Shoeing a bay mare	606	<i>F R I</i>
28 — Highland Dogs	607	<i>F R</i>
T 29 — Alexander and Diogenes	608	<i>F R I</i>
30 — A distinguished Member of the Humane Society	1226	<i>F R I</i> <i>Facs.</i>
31 — Study of a Lion	1349	<i>F R I</i> <i>Facs.</i>
32 — Study of a Lion	1350	<i>F R I</i> <i>Facs.</i>
78 — Portrait of John Landseer	—	<i>F R</i>
79 — Peace	413	<i>F R</i>

NATIONAL GALLERY LONDON

	No. of the National Gallery Catalogue	
80 Edwin Landseer. War	414	<i>F R</i>
81 — The Defeat of Comus	605	<i>F R</i>
T 82 — The Maid and the Magpie	609	<i>F R I</i>
33 Thomas Lawrence. A Child with a Kid	922	<i>F R</i>
34 — Portrait of Miss Caroline Fry	1307	<i>F R</i>
83 — Portrait of the late John Julius Angerstein, the Banker, and Collector of the Angerstein Gallery	129	<i>F R</i>
84 — Portrait of Mrs. Siddons	785	<i>F R</i>
Le Brun see Vigée-Lebrun.		
T 35 Charles R. Leslie. Uncle Toby and Widow Wadman in the Sentry Box	403	<i>F R</i>
T 85 — Sancho Panza in the Apartment of the Duchess	402	<i>F R</i>
T 86 Daniel Maclise. The Play Scene in Hamlet	422	<i>F R</i>
T 87 — Malvolio and the Countess	423	<i>F R</i>
88 George Morland. The Inside of a Stable	1030	<i>F R</i>
89 Henry Robert Morland. The Laundry Maid	1402	<i>F R</i>
90 — The Laundry Maid	1403	<i>F R</i>
T 91 Andrew Morton. Portrait of the Hon. Marianna Devereux, Lady Cockburn	1368	<i>F R</i>
T 92 William J. Müller. Landscape, a River Scene	1040	<i>F R</i>
T 93 — Dredging on the Medway	1474	<i>F R</i>
T 140 — Landscape, two Lycian Peasants seated on the ground	379	<i>F</i>
94 William Mulready. The Last In	393	<i>F R</i>
95 B. Nebot. Covent Garden Market, with St. Paul's Church	1453	<i>F R</i>

NATIONAL GALLERY LONDON

	No. of the National Gallery Catalogue	
T 141 Gilbert Stuart Newton. Yorick and the Grisette	353	<i>F</i>
96 John Opie. Portrait said to represent Mary Wollstonecraft (Mrs. Godwin)	1167	<i>F R</i>
142 — Portrait of a Boy	1408	<i>F</i>
97 Henry Raeburn. Portrait, of Lieut.-Colonel Bryce McMurdo	1435	<i>F R</i>
36 Joshua Reynolds. The Graces decorating a terminal figure of Hymen	79	<i>F R I</i>
37 — The Infant Samuel, kneeling at, Prayer	162	<i>F R</i>
38 — Head of Angels	182	<i>F R I</i>
39 — The Age of Innocence	307	<i>F R</i>
40 — Dr. Samuel Johnson	887	<i>F R</i>
41 — Portrait of Lady Cockburn and her Children	1365	<i>F R</i>
93 — Portrait of Lord Heathfield, with the key of the fortress of Gibraltar in his hand	111	<i>F R</i>
99 — Portrait of Himself	306	<i>F R</i>
100 — Portrait of Captain Orme	681	<i>F R</i>
101 — Portraits of two Gentlemen	754	<i>F R</i>
102 — The Snake in the Grass, or Love unbinding the zone of Beauty	885	<i>F R</i>
103 — George IV. as Prince of Wales, with Star and Ribbon of the Garter	890	<i>F R</i>
104 — Portrait of a Lady	891	<i>F R</i>
105 — Robinetta	892	<i>F R</i>
106 — Portrait of Anne, Countess of Albemarle	1259	<i>F R</i>

NATIONAL GALLERY LONDON

	No. of the National Gallery Catalogue	
143 Joshua Reynolds. A Man's Head in profile . . .	106	<i>F</i>
144 — The Banished Lord, a head	107	<i>F</i>
145 — Portrait of Sir Abraham Hume, Bart, F. R. S.	305	<i>F</i>
146 — Admiral Keppel	886	<i>F</i>
147 — James Boswell, the Biographer of Johnson .	888	<i>F</i>
148 — His own Portrait	889	<i>F</i>
T 107 David Roberts. Chancel of the Collegiate Church of St. Paul at Antwerp	401	<i>F R</i>
42 George Romney. The Parson's Daughter . . .	1068	<i>F R I</i>
43 — Study of Lady Hamilton as a Bacchante . .	312	<i>F R I</i>
108 — Portraits of Mr. and Mrs. William Lindow .	1396	<i>F R</i>
149 — Portrait of Mrs. Mark Currie	1651	<i>F R I</i>
109 Gabriel Charles Dante Rossetti. "Ecce Ancilla Domini" (The Annunciation)	1210	<i>F R I</i>
110 — "Beata Beatrix"	1279	<i>F R I</i>
111 — Rosa Triplex	—	<i>F R</i>
112 Ary Scheffer. St. Augustine and St. Monica . .	1170	<i>F R</i>
T 44 Clarkson Stanfield. Entrance to the Zuyder Zee, Texel Island	404	<i>F R</i>
113 Thomas Stothard. A Greek Vintage. A Dance in the Vineyard	317	<i>F R</i>
150 — From the Myth of Narcissus	1069	<i>F R</i>
151 George Stubbs. Landscape with a Gentleman holding his Horse	1452	<i>F</i>

NATIONAL GALLERY LONDON

	No. of the National Gallery Catalogue	
45 Joseph M. W. Turner, Calais Pier	472	<i>F R I</i>
46 — The Sun rising in a Mist	479	<i>F R</i>
47 — The Shipwreck	476	<i>F R I</i>
48 — Spithead: Boat's Crew recovering an Anchor	481	<i>F R</i>
49 — Ulysses deriding Polyphemus	508	<i>F R I</i>
50 — The "Fighting Temeraire" tugged to her last berth to be broken up	524	<i>F R I</i>
51 — Snow Strom	530	<i>F R</i>
52 — Rain, Steam, and Speed, the Great Western Railway	538	<i>F R</i>
53 — Chichester Canal	560	<i>F R</i>
114 — The Prince of Orange, afterwards William III., landing at Torbay, November the 5th, 1688 .	369	<i>F R I</i>
115 — Venice, The Ducal palace. Canaletti painting	370	<i>F R I</i>
116 — The Goddess of Discord choosing the Apple of Contention in the Garden of the Hes- perides	477	<i>F R</i>
117 — The Death of Nelson, October the 21st 1805, at the Battle of Trafalgar, on board the "Victory"	480	<i>F R</i>
118 — Crossing the Brook	497	<i>F R</i>
119 — Dido building Carthage; or the Rise of the Carthaginian Empire	498	<i>F R</i>
120 — Carthage. Dido directing the Equipment of the Fleet	506	<i>F R</i>
121 — Childe Harold's Pilgrimage. Italy	516	<i>F R</i>

NATIONAL GALLERY LONDON

	No. of the National Gallery Catalogue	
122 Joseph M. W. Turner. Peace. Burial at Sea of the Body of Sir David Wilkie	528	<i>F R</i>
123 — Fishing Boats in a stiff Breeze, off the Coast	813	<i>F R</i>
152 — The artists palette	—	<i>F</i>
153 — Portrait of himself, when young	458	<i>F</i>
154 — A Frosty Morning; Sunrise	492	<i>F</i>
155 — The Bay of Baiæ, Apollo and the Sibyl	505	<i>F</i>
156 — Caligula's Palace and Bridge. Bay of Baiæ	512	<i>F</i>
157 — Apollo and Daphne. The Vale of Tempe	520	<i>F</i>
158 — Agrippina landing with the Ashes of Germanicus	523	<i>F</i>
159 — Approach to Venice, looking towards Fusina	534	<i>F</i>
160 — The "Sun of Venice" going to Sea	535	<i>F</i>
161 — Petworth Park. Tillington Church in the Distance	559	<i>F</i>
162 Unknown. Portrait of a Young Man (Poet Gay?)	1076	<i>F</i>
163 — Portrait of Lady Stewart, of Allanbank	1357	<i>F</i>
124 Emile Jean Horace Vernet. Portrait of Napoleon I.	1285	<i>R R</i>
164 Elisabeth Louise Vigée-Lebrun. Portrait of the Artist	1653	<i>F R I</i>
T 125 Frederick Walker. The Vagrants	1209	<i>F R I</i>
T 126 Edward Matthew Ward. Doctor Johnson in the Anteroom of Lord Chesterfield, Waiting for an Audience, 1748	430	<i>F R</i>

NATIONAL GALLERY LONDON

	No. of the National Gallery Catalogue	
T 127 Edward Matthew Ward. The South Sea Bubble, a Scene in Change Alley in 1720	432	<i>F R</i>
T 128 — James II., in his Palace of Whitehall, receiving the News of the Landing of the Prince of Orange, in 1688	616	<i>F R</i>
T 129 Thomas Webster. A Dame's School	427	<i>F R</i>
T 165 — Going into School, called also The Truant	426	<i>F</i>
130 Richard Westall. Portrait of Philip Sansom jun., when a child	1414	<i>F R</i>
131 David Wilkie. The Blind Fiddler	99	<i>F R</i>
132 — The Village Festival	122	<i>F R</i>
T 133 — The Preaching of Knox before the Lords of the Congregation 10 th June 1559	894	<i>F R</i>
T 166 — Sketch of Blind Man's Buff	921	<i>F</i>
T 167 Thomas Woodward. The Ratcatcher	1379	<i>F R</i>
168 Johann Zoffany. Portrait of Sir James Cockburn (6 th Bart.) and his Daughter	1371	<i>F</i>
134 — (Ascribed to.) Portrait of David Garrick, the Actor	1197	<i>F R</i>



Important new Publication.

THE DUKE OF DEVONSHIRE'S
COLLECTION OF PAINTINGS.

— 60 Photogravure Plates —

with

an Introduction

by

S. ARTHUR STRONG

Librarian of the House of the Lords.

→ Full particulars and Prospectus on application. →

Dedicated by special permission to Her late Majesty Queen Victoria.

HANS HOLBEIN

PORTRAITS

of

ILLUSTRIOUS PERSONAGES IN ENGLISH HISTORY

of the Mediaeval Period

comprising fifty-four Facsimile Gravures on Japan paper

from the

Original drawings in the Library at Windsor Castle

with a short introduction

by

RICHARD R. HOLMES

chief librarian to Her late Majesty

In a handsomely bound Q^{to} volume Price £ 5. 5. 0.

The reproductions will be found true facsimiles of the originals and therefore cannot fail to be of great service to *Artists* and also of much interest to *Collectors* and *Historical Students*.

MY OTHER GALLERY-PUBLICATIONS
ISSUED IN IDENTICAL MANNER COMPRISE

THE GALLERIES AT:

BERLIN • DRESDEN • MUNICH • MILAN • VENICE
FLORENZ • THE PITTI • THE UFFIZI • ROM • NEAPEL
[TATE GALLERY] • LONDON • DULWICH • EDINBURGH
GLASGOW • BUCKINGHAM PALACE • WINDSOR CASTLE
BRUSSELS • HAGUE • HAARLEM • AMSTERDAM • VIENNA

ART ALBUMS HAVE BEEN ISSUED WITH DESCRIPTIVE TEXT

ON THE FOLLOWING COLLECTIONS :

THE • DRESDEN GALLERY • TEXT BY H. LÜCKE

THE • NATIONAL GALLERY • LONDON

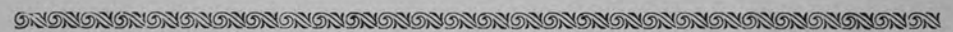
TEXT BY CHARLES L. EASTLAKE

THE • AMSTERDAM GALLERY • TEXT BY A. BREDIUS

THE • HAGUE GALLERY • TEXT BY A. BREDIUS

THE VAN DYCKS AT WINDSOR CASTLE &c. &c. &c.

FULL DETAILS ON APPLICATION.



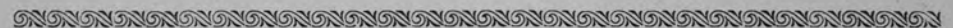
I have also a large stock of Reproductions from

THE WALLACE COLLECTION • THE BRITISH MUSEUM

The LOUVRE • The Luxembourg • PARIS • The Prado MADRID

The HERMITAGE ST. PETERSBURG

published by other Competent Photographers.



ALL SUBJECTS MENTIONED ABOVE ARE PERMANENTLY

ON • VIEW • AT

16 PALL MALL EAST S.W.

PHOTOGRAVURES

(PHOTO-ENGRAVINGS from Copper Plates)

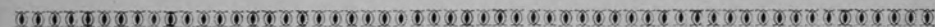
from works of

OLD AND MODERN MASTERS

specially suitable for

WALL DECORATION

SEE SPECIAL LIST.



PARTICULAR ATTENTION DEVOTED TO

ARTISTIC FRAMING

SPECIMENS OF WHICH ARE ALWAYS ON VIEW AT

— 16 PALL MALL EAST. S.W. —

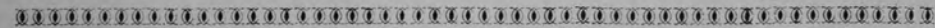


MY • CATALOGUE • OF

— MODERN ART — SACRED AND SECULAR

COMPRISES OVER 10000 SUBJECTS — RICHLY ILLUSTRATED
PRICE 1/—.

LISTS AND PROSPECTUSES — postfree on application.



FRANZ HANFSTAENGL

16 PALL MALL EAST

(NEARLY OPPOSITE THE NATIONAL GALLERY)

* LONDON * SW. *

* MUNICH *

* NEW YORK *